

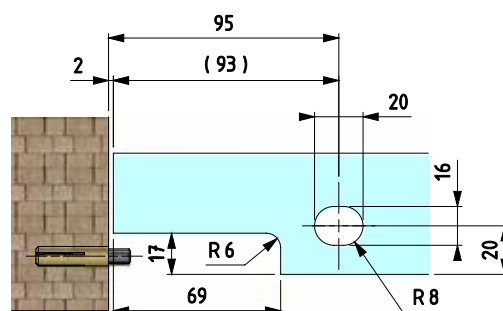
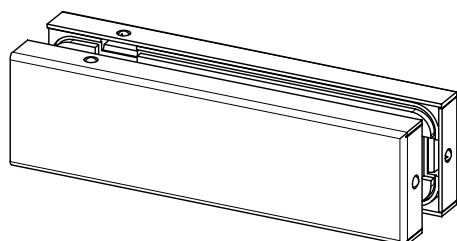
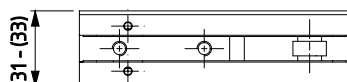
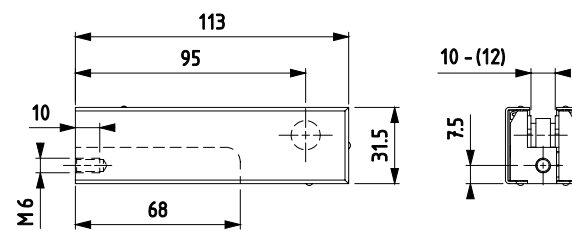
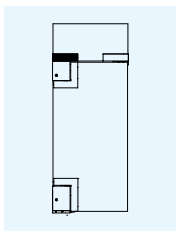
PORTE ESTERNE - PUERTAS ESTERIORES OUTER DOORS - AUSSENTÜREN

ATTENZIONE: Per installazioni in condizioni ambientali e climatiche particolari (es. umide, acide, saline), consultare prima l'ufficio commerciale - ADVERTENCIA: para su instalación en particular clima o ambiente (por ejemplo - húmedo, ácido, ambiente salino) consulte a la oficina de ventas - CAUTION: For installations in particular environments or climate (ex. wet, acid, saline) consult sales office first - ACHTUNG: Bei Installationen in Sondermilieus oder -klima (z.B.: nass, saure, salzig) wenden Sie sich vorher an der Verkaufsabteilung

8204



- Attacco sopra luce a muro laterale senza battuta.
- Fijación a bisagra superior y montante sin tope.
- Transom attachment-side wall without stop .
- Kupplung für Oberlichtfenster. Montage an der Seitenwand. Ohne Anschlag.



8207



- Attacco sopra luce a muro laterale con battuta.
- Fijación a bisagra superior y montante con tope.
- Transom attachment-side wall with stop.
- Kupplung für Oberlichtfenster. Montage an der Seitenwand. Mit Anschlag.

